



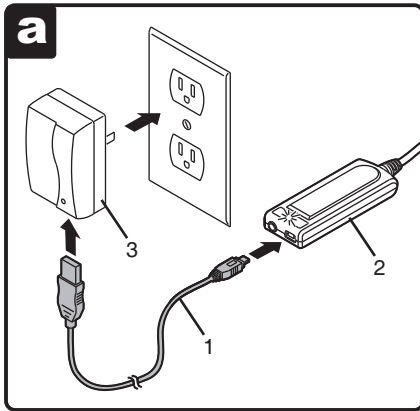
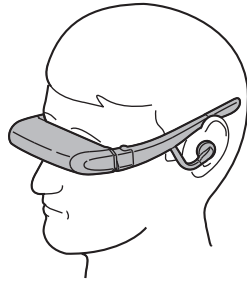
ICULTI
VIDEO EYEWEAR



AV230 USER GUIDE

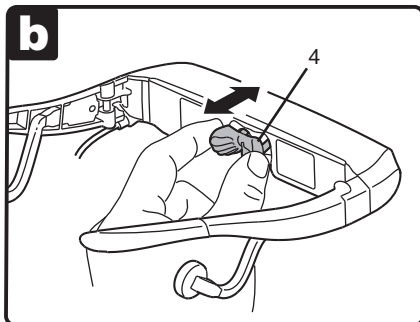
Welcome to the world of big screen viewing! Your Iculti AV230 consists of a wearable binocular viewer with adjustable, removable hi-fi stereo headphones, adjustable nosepiece, AC charger, headstrap, audio/video cables, and carrying case. The AV230 delivers extraordinary high quality images and Iculti 3D™ video support (with 3D content). It's like having your own personal, portable movie theater!

Please read the included safety instructions before continuing.

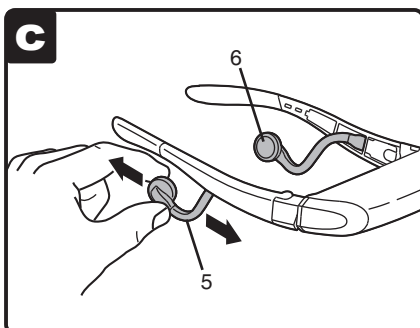


Charge your battery. Plug the included charging cable (1) into the Battery Box (2) and the AC adapter (3).

LED indicator:
green - charge OK
red - charge low
flash red - needs recharging
amber - charging

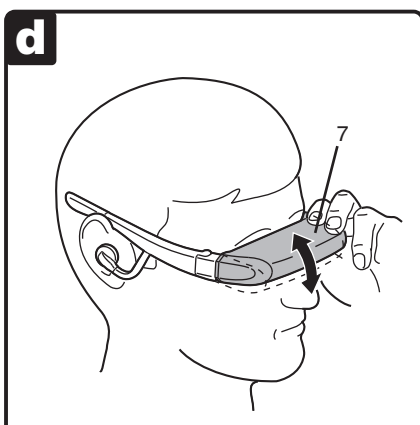


Adjust the nosepiece (4) until the viewer sits at a comfortable distance from your eyes.



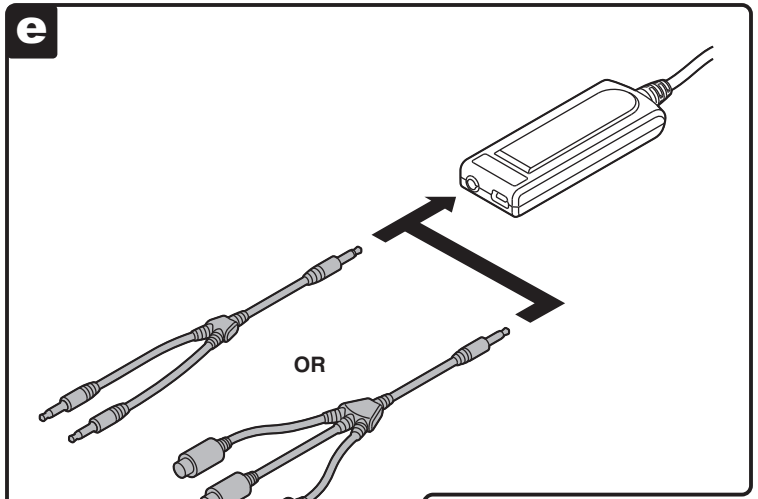
Gently bend the headphone stems (5) until the headphones (6) fit comfortably over your ears.

Note that the headphones are not designed to fit in your ears.



Wear the Iculti AV230 just like a pair of glasses.

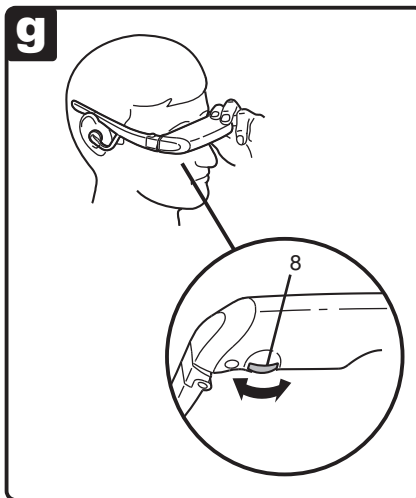
Using the AccuTilt™ hinge, adjust the viewer (7) to find the most comfortable viewing angle.



Attach your video/audio player using either of the included cables.

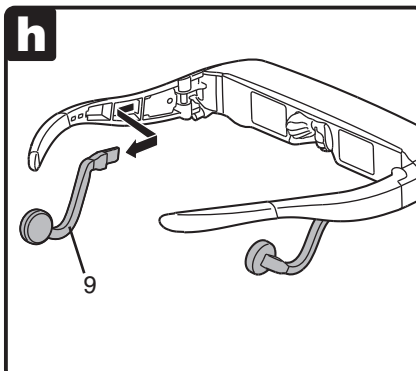
Play your favorite video or movie!

Visit www.iculti.com for other accessory cables.



With a movie playing, use the focus adjustment knobs (8) to individually focus the left and right displays.

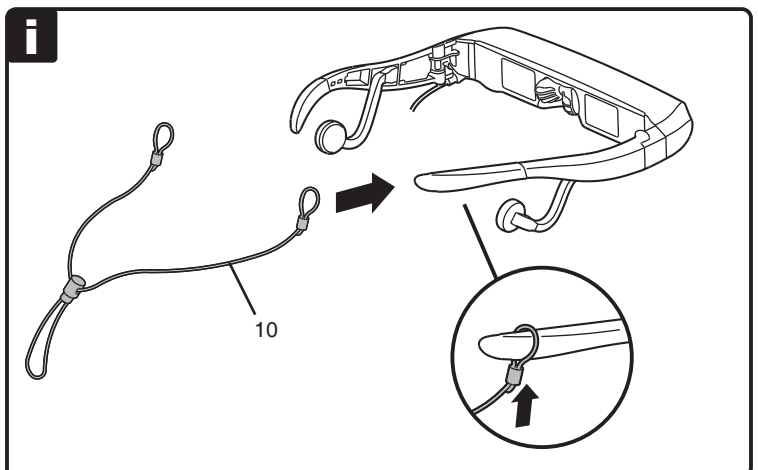
It may help to relax and focus only one eye at a time.



Remove headphone assemblies (9) to use the AV230 with your own headphones.

Plug your headphones into the headphone jack on your player.

When reinserting, ensure the headphone stems are inserted fully.



For added stability, attach the headstrap (10) to the AV230 temples.

Important Safety Instructions

Follow these safety instructions when using or handling your ICUITI Video Eyewear to reduce the risk of fire, electric shock, and injury to persons and property.

1. READ ALL OF THE INSTRUCTIONS AND SAFETY INFORMATION PROVIDED BEFORE USING THIS PRODUCT.
2. Use the product only for its intended use, as described in this manual.
3. Close supervision is needed when this product is by or near children.
4. Children under the age of seven (7) are still learning to focus and track with their eyes. Their vision is still immature. For these reasons, **THIS PRODUCT SHOULD NOT BE USED BY CHILDREN UNDER THE AGE OF SEVEN (7).**
5. A very small portion of the population may experience epileptic seizures when viewing certain kinds of flashing lights or patterns that are commonly present in our daily environment. These persons also experience seizures while watching some kinds of television pictures or playing certain video games including the use of a display system, such as this product. Consult a physician if you have any epileptic condition or if you experience any of the following symptoms while using this device: altered vision, muscle twitching, other involuntary movements, loss of awareness of your surroundings, mental confusion, and/or convulsions.
6. Immersive video, whether viewed on a regular TV, a movie theater screen or an Icuiti video display, can potentially have adverse effects on the user including motion sickness, perceptual after effects and disorientation, and decreased postural stability and eye strain. Take frequent breaks to lessen the potential of these effects, as is commonly suggested for other items, such as keyboards and computer monitors, that you may tend to fixate or concentrate on. If your eyes show signs of fatigue or dryness or if any of the above symptoms is noted, immediately discontinue use of this device and do not resume using it for at least 30 minutes after the symptoms have subsided.
7. Permanent or temporary hearing loss or impairment can result from excessive volume levels emitted from the headphones. Always adjust the volume to a safe level BEFORE wearing the product or headphones.
8. Always be aware of the world around you. This product will immerse you in realistic sights and sounds, possibly causing you to forget about the real world around you and the threats to your well being and the well being of others. DO NOT use this product near stairs, balconies, or other things that can be tripped over, run into, knocked down or fallen over. This product should only be used while you are seated and never while using sharp or potentially dangerous objects, operating any form of mechanical device, driving motor vehicles, or performing any act that normally requires you to see what you are doing.
9. This product may be tethered to a power outlet and cables may extend between components. Be careful that these cords do not tangle around you or pose a potential threat to the safety of others.
10. Do not disassemble this product. If service work is required, contact Icuiti using the Support contact information shown in this manual.
11. Do not pull or yank on the cable, kink any of the cables or tie them in sharp or tight knots. Do not hang the product or allow it to be suspended by any of its cables. To disconnect cables, pull on the cable connector. Cables damaged by such actions are not covered by the product's limited warranty.
12. Do not drop, strike, or cause any portion of the product to be struck or shaken aggressively. Such actions may damage the product and void your warranty.
13. Save these instructions.

Immediately unplug the product from external power sources if:

- The power cord or USB cord is damaged or frayed.
- Liquid has been sprayed, splashed or poured on the product.
- Any component of the product has been dropped or damaged.
- The product exhibits any distinct change in performance

Battery Safety Instructions

- Batteries contain toxic materials. Do not burn, disassemble, mutilate, or puncture the batteries.
- Do not dispose of batteries in a fire.
- Dispose of batteries in a method that is consistent with your local laws and regulations.

Worldwide Limited Warranty

General Terms

EXCEPT AS EXPRESSLY SET FORTH IN THIS LIMITED WARRANTY, ICUITI MAKES NO OTHER WARRANTIES OR CONDITIONS, EXPRESS OR IMPLIED, INCLUDING ANY IMPLIED WARRANTIES OF MERCHANTABILITY AND FITNESS FOR A PARTICULAR PURPOSE. ICUITI EXPRESSLY DISCLAIMS ALL WARRANTIES AND CONDITIONS NOT STATED IN THIS LIMITED WARRANTY. ANY IMPLIED WARRANTIES THAT MAY BE IMPOSED BY LAW ARE LIMITED IN DURATION TO THE LIMITED WARRANTY PERIOD. SOME STATES OR COUNTRIES DO NOT ALLOW A LIMITATION ON HOW LONG AN IMPLIED WARRANTY LASTS OR THE EXCLUSION OR LIMITATION OF INCIDENTAL OR CONSEQUENTIAL DAMAGES FOR CONSUMER PRODUCTS. IN SUCH STATES OR COUNTRIES, SOME EXCLUSIONS OR LIMITATIONS OF THIS LIMITED WARRANTY MAY NOT APPLY TO YOU.

This Limited Warranty applies to the ICUITI branded hardware products sold by or leased from ICUITI Corporation, its worldwide subsidiaries, affiliates, authorized resellers, or country distributors (collectively referred to in this Limited Warranty as "ICUITI") with this Limited Warranty. This Limited Warranty is applicable in all countries and may be enforced in any country where ICUITI or its authorized service providers offer warranty service subject to the terms and conditions set forth in this Limited Warranty. However, warranty service availability and response times may vary from country to country and may also be subject to registration requirements in the country of purchase.

ICUITI warrants that the ICUITI hardware product and all the internal components of the product that you have purchased or leased from ICUITI are free from defects in materials or workmanship under normal use during the Limited Warranty Period. The Limited Warranty Period starts on the date of purchase or lease from ICUITI. Your dated sales or delivery receipt, showing the date of purchase or lease of the product, is your proof of the purchase or lease date. You may be required to provide proof of purchase or lease as a condition of receiving warranty service. You are entitled to warranty service according to the terms and conditions of this document if a repair to your ICUITI branded hardware is required within the Limited Warranty Period. This Limited Warranty extends only to the original purchaser or lessee of this ICUITI branded product and is not transferable to anyone who obtains ownership of the ICUITI branded product from the original purchaser or lessee.

ICUITI products are manufactured using new materials or new and used materials equivalent to new in performance and reliability. Spare parts may be new or equivalent to new. Spare parts are warranted to be free from defects in material or workmanship for thirty (30) days or for the remainder of the Limited Warranty Period of the ICUITI hardware product in which they are installed, whichever is longer.

During the Limited Warranty Period, ICUITI will repair or replace the defective component parts or the hardware product. All component parts or hardware products removed under this Limited Warranty become the property of ICUITI. The replacement part or product takes on either the Limited Warranty status of the removed part or product or the thirty (30) day limited warranty of the spare part. In the unlikely event that your ICUITI product has a recurring failure, ICUITI, at its discretion, may elect to provide you with a replacement unit of ICUITI's choosing that is at least equivalent to your ICUITI branded product in hardware performance. ICUITI reserves the right to elect, at its sole discretion, to give you a refund of your purchase price or lease payments (less interest) instead of a replacement. This is your exclusive remedy for defective products. YOU SHOULD MAKE PERIODIC BACKUP COPIES OF THE DATA STORED ON YOUR HARD DRIVE, FLASH MEMORY, OR OTHER STORAGE DEVICES, WHERE APPLICABLE, AS A PRECAUTION AGAINST POSSIBLE FAILURES, ALTERATION, OR LOSS OF THE DATA. BEFORE RETURNING ANY UNIT FOR SERVICE, BE SURE TO BACK UP DATA AND REMOVE ANY CONFIDENTIAL, PROPRIETARY, OR PERSONAL INFORMATION. ICUITI IS NOT RESPONSIBLE FOR DAMAGE TO OR LOSS OF ANY PROGRAMS, DATA, OR REMOVABLE STORAGE MEDIA. ICUITI IS NOT RESPONSIBLE FOR THE RESTORATION OR REINSTALLATION OF ANY PROGRAMS OR DATA OTHER THAN SOFTWARE INSTALLED BY ICUITI WHEN THE PRODUCT IS MANUFACTURED.

ICUITI does not warrant that the operation of this product will be uninterrupted or error-free. ICUITI is not responsible for damage that occurs as a result of your failure to follow the instructions that came with the ICUITI branded product.

This Limited Warranty does not apply to expendable parts. This Limited Warranty does not extend to any product from which the serial number has been removed or that has been damaged or rendered defective (a) as a result of accident, misuse, abuse, or other external causes; (b) by operation outside the usage parameters stated in the user documentation that shipped with the product; (c) by the use of parts not manufactured or sold by ICUITI; or (d) by modification or service by anyone other than (i) ICUITI, (ii) a ICUITI authorized service provider, or (iii) your own installation of end-user replaceable ICUITI or ICUITI approved

parts if available for your product in the servicing country.

These terms and conditions constitute the complete and exclusive warranty agreement between you and ICUITI regarding the ICUITI branded product you have purchased or leased. These terms and conditions supersede any prior agreements or representations-including representations made in ICUITI sales literature or advice given to you by ICUITI or an agent or employee of ICUITI-that may have been made in connection with your purchase or lease of the ICUITI branded product. No change to the conditions of this Limited Warranty is valid unless it is made in writing and signed by an authorized representative of ICUITI.

Limitation of Liability

IF YOUR ICUITI BRANDED HARDWARE PRODUCT FAILS TO WORK AS WARRANTED ABOVE, YOUR SOLE AND EXCLUSIVE REMEDY SHALL BE REPAIR OR REPLACEMENT. ICUITI'S MAXIMUM LIABILITY UNDER THIS LIMITED WARRANTY IS EXPRESSLY LIMITED TO THE LESSER OF THE PRICE YOU HAVE PAID FOR THE PRODUCT OR THE COST OF REPAIR OR REPLACEMENT OF ANY HARDWARE COMPONENTS THAT MALFUNCTION IN CONDITIONS OF NORMAL USE.

ICUITI IS NOT LIABLE FOR ANY DAMAGES CAUSED BY THE PRODUCT OR THE FAILURE OF THE PRODUCT TO PERFORM, INCLUDING ANY LOST PROFITS OR SAVINGS OR SPECIAL, INCIDENTAL, OR CONSEQUENTIAL DAMAGES. ICUITI IS NOT LIABLE FOR ANY CLAIM MADE BY A THIRD PARTY OR MADE BY YOU FOR A THIRD PARTY.

THIS LIMITATION OF LIABILITY APPLIES WHETHER DAMAGES ARE SOUGHT, OR A CLAIM MADE, UNDER THIS LIMITED WARRANTY OR AS A TORT CLAIM (INCLUDING NEGLIGENCE AND STRICT PRODUCT LIABILITY), A CONTRACT CLAIM, OR ANY OTHER CLAIM. THIS LIMITATION OF LIABILITY CANNOT BE WAIVED OR AMENDED BY ANY PERSON. THIS LIMITATION OF LIABILITY WILL BE EFFECTIVE EVEN IF YOU HAVE ADVISED ICUITI OR AN AUTHORIZED REPRESENTATIVE OF ICUITI OF THE POSSIBILITY OF ANY SUCH DAMAGES.

THIS LIMITED WARRANTY GIVES YOU SPECIFIC LEGAL RIGHTS. YOU MAY ALSO HAVE OTHER RIGHTS THAT MAY VARY FROM STATE TO STATE OR FROM COUNTRY TO COUNTRY. YOU ARE ADVISED TO CONSULT APPLICABLE STATE OR COUNTRY LAWS FOR A FULL DETERMINATION OF YOUR RIGHTS.

Warranty Period

The warranty period for ICUITI products is as follows (i) on all electronics, one (1) year from the date of product purchase, and (ii) for all optics and mechanical components (including cables and connectors), ninety (90) days from the date of product purchase. This warranty does not extend to any expendable parts, if applicable.

Types of Warranty Service

If your product needs service, refer to the ICUITI website at www.icuiti.com or your product's manual. You can also call the ICUITI Technical Support Center at (800) 436-7838 in North America. A technical support specialist will help you diagnose the problem. If it is determined your product needs service, the following options are available to you.

Pick-up Warranty Service

If your product needs a hardware repair that is covered under warranty, please repackage the unit in its original packaging or equivalent packaging material to protect the product for return shipment. ICUITI will then give you return shipping instructions from your location. The product will be repaired and delivered to the location of your choice within the same country. For valid warranty claim servicing, ICUITI will pay the return shipping costs for your product.

ICUITI Replaceable Parts Program

Where available, the ICUITI Replaceable Parts program ships approved replacement parts directly to you to fulfill your warranty. This will save considerable repair time. After you call the ICUITI Technical Support Center at (800) 436-7838, a replaceable part can be sent directly to you. Once the part arrives, call the ICUITI Technical Support Center. A technician will assist you over the phone to ensure that the installation is quick and easy.

Warranty Transfer to Another Country

Under the ICUITI Global Warranty program, products may be purchased in one country and transferred to another country, where ICUITI has a service presence, without voiding the warranty. Warranty terms, service availability, and service response times may vary from country to country. A customer may be required to provide product-specific information, in accordance with the ICUITI Global Warranty Notification process, prior to moving the products. The required information ensures that ICUITI is prepared to provide the required level of warranty service in the destination country and that the product is designed to work in the destination country. Contact ICUITI, your local ICUITI authorized reseller, or refer to the website at www.icuiti.com/support to begin the ICUITI Global Warranty Notification process prior to transferring ICUITI products to another country.

ICUITI is not responsible for any tariffs or duties that may be incurred in transferring the products. Products may be covered by export controls issued by the United States or other governments.

Technical Support

Technical support is defined as assistance with questions on issues about the software that was either preinstalled by ICUITI on the ICUITI branded product or that was included with the ICUITI branded product at the time of your purchase or lease of the product. Technical support for software is available for the first ninety (90) days from date of product purchase or lease. Your dated sales or delivery receipt, showing the date of purchase or lease of the product, is your proof of the purchase or lease date. You may be required to provide proof of purchase or lease as a condition of receiving software technical support. After the first ninety (90) days, technical support for software that was either preinstalled by ICUITI on the ICUITI branded product or included with the ICUITI branded product at the time of your purchase or lease of the product is available for a fee. Contact ICUITI for additional information.

Service Upgrades

ICUITI may offer extra coverage for your product. For information on service upgrades, refer to www.icuiti.com or ask your local reseller. Service upgrades purchased in one country are NOT transferable to another country.

Contacting ICUITI

- In the United States or Canada, refer to the ICUITI website at www.icuiti.com or call (800) 436-7838. Technical support and general product information in the United States and Canada, 5 days a week, 9AM to 5PM Eastern Time.
- Be sure to have the following information available before you call ICUITI:
 - Serial number, model name, and model number
 - Operating system and version of operating system
 - Applicable error messages
 - Third-party hardware or software installed
 - Add-on options if applicable
 - Detailed questions you need answers to

NOTE: This equipment has been tested and found to comply with the limits for a Class B digital device, pursuant to Part 15 of the FCC Rules. These limits are designed to provide reasonable protection against harmful interference in a residential installation. This equipment generates, uses and can radiate radio frequency energy and, if not installed and used in accordance with the instructions, may cause harmful interference to radio communications. However, there is no guarantee that interference will not occur in a particular installation. If this equipment does cause harmful interference to radio or television reception, which can be determined by turning the equipment off and on, the user is encouraged to try to correct the interference by one or more of the following measures: 1) Increase the separation between the equipment and receiver or 2) Connect the equipment into an outlet on a circuit different from that to which the receiver is connected.

© Copyright 2006, Icuiti Corporation. All rights reserved

The products, specifications, and other content of this User's Guide are subject to change without notice.



ICUITI
VIDEO EYEWEAR